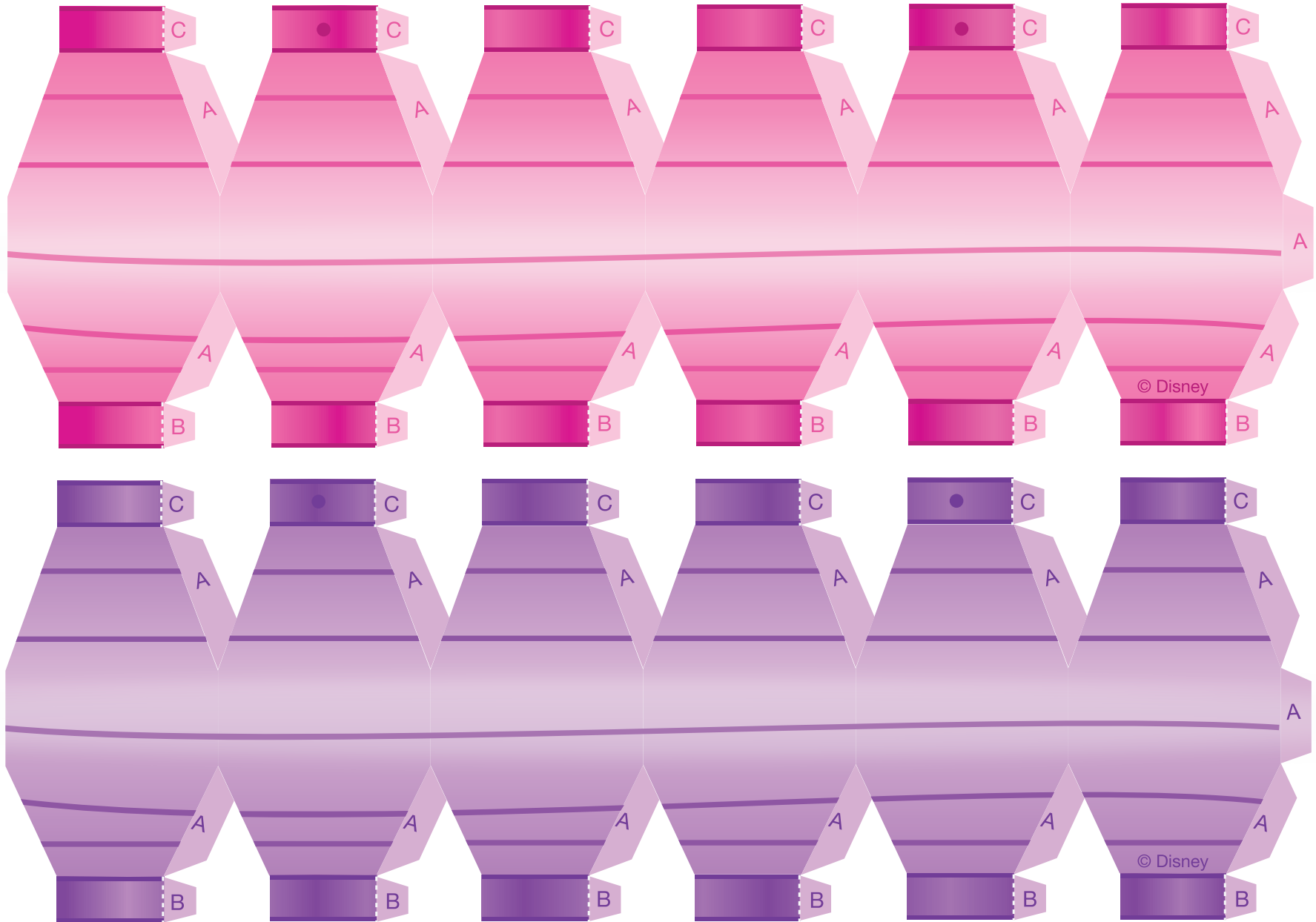
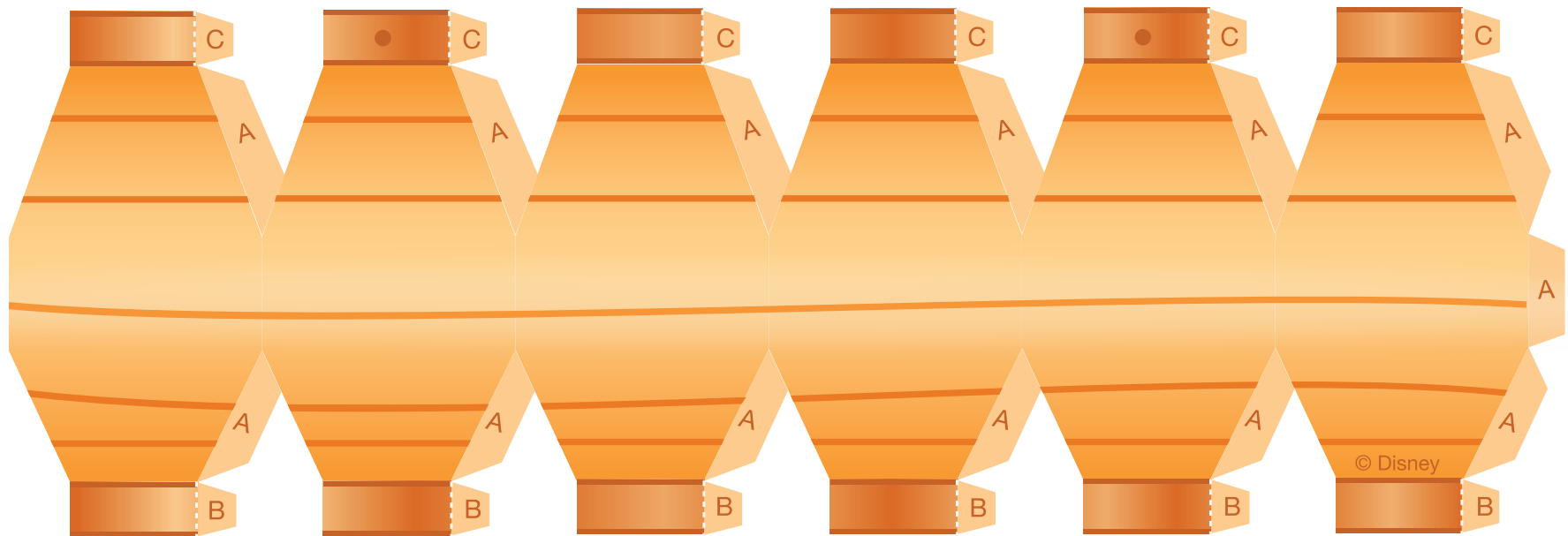


Short Round Lanterns

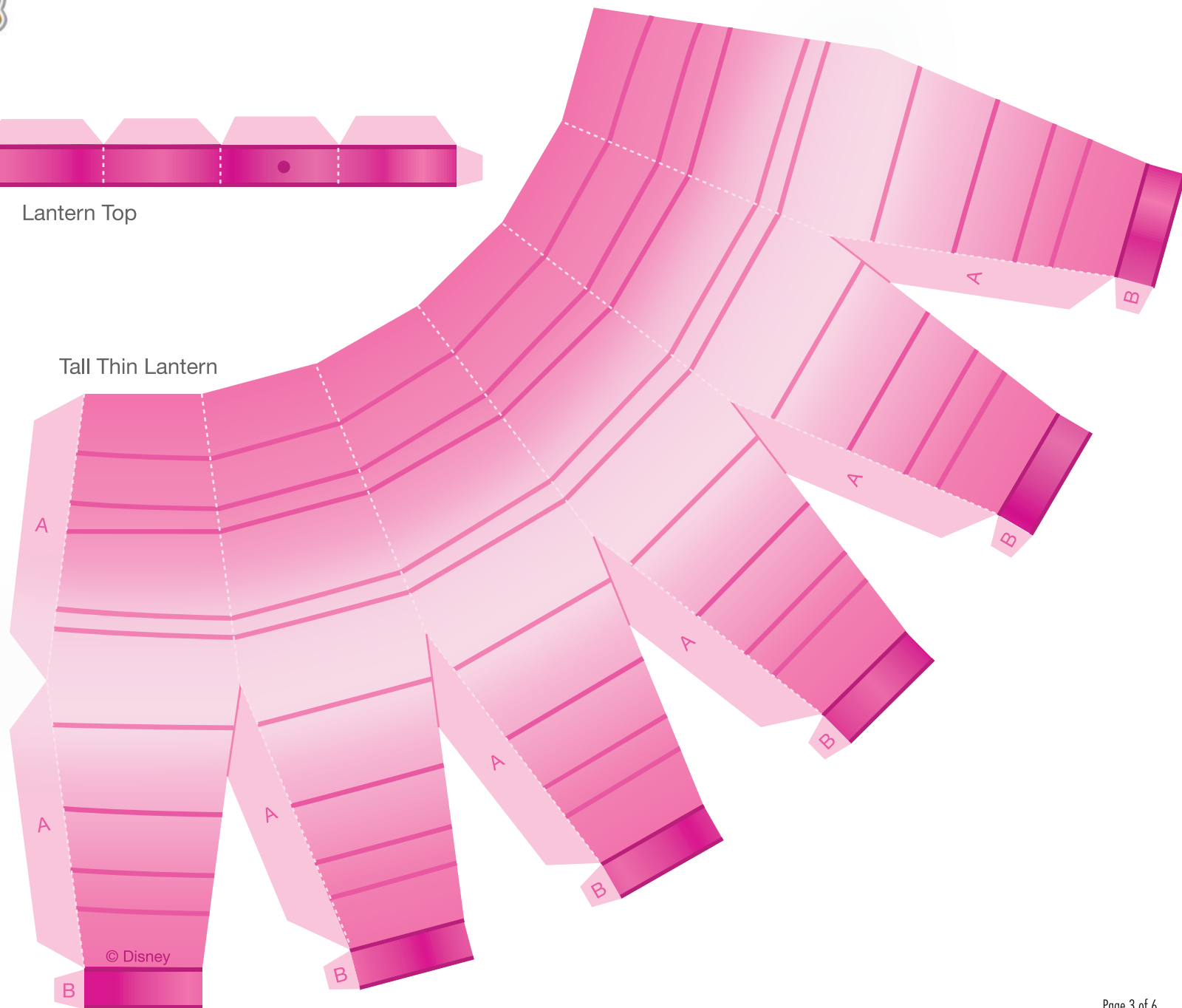


Short Round Lantern

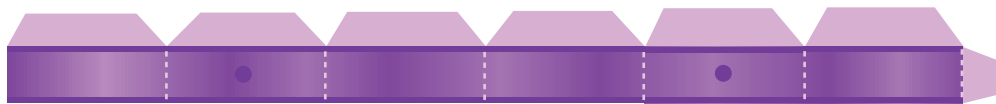




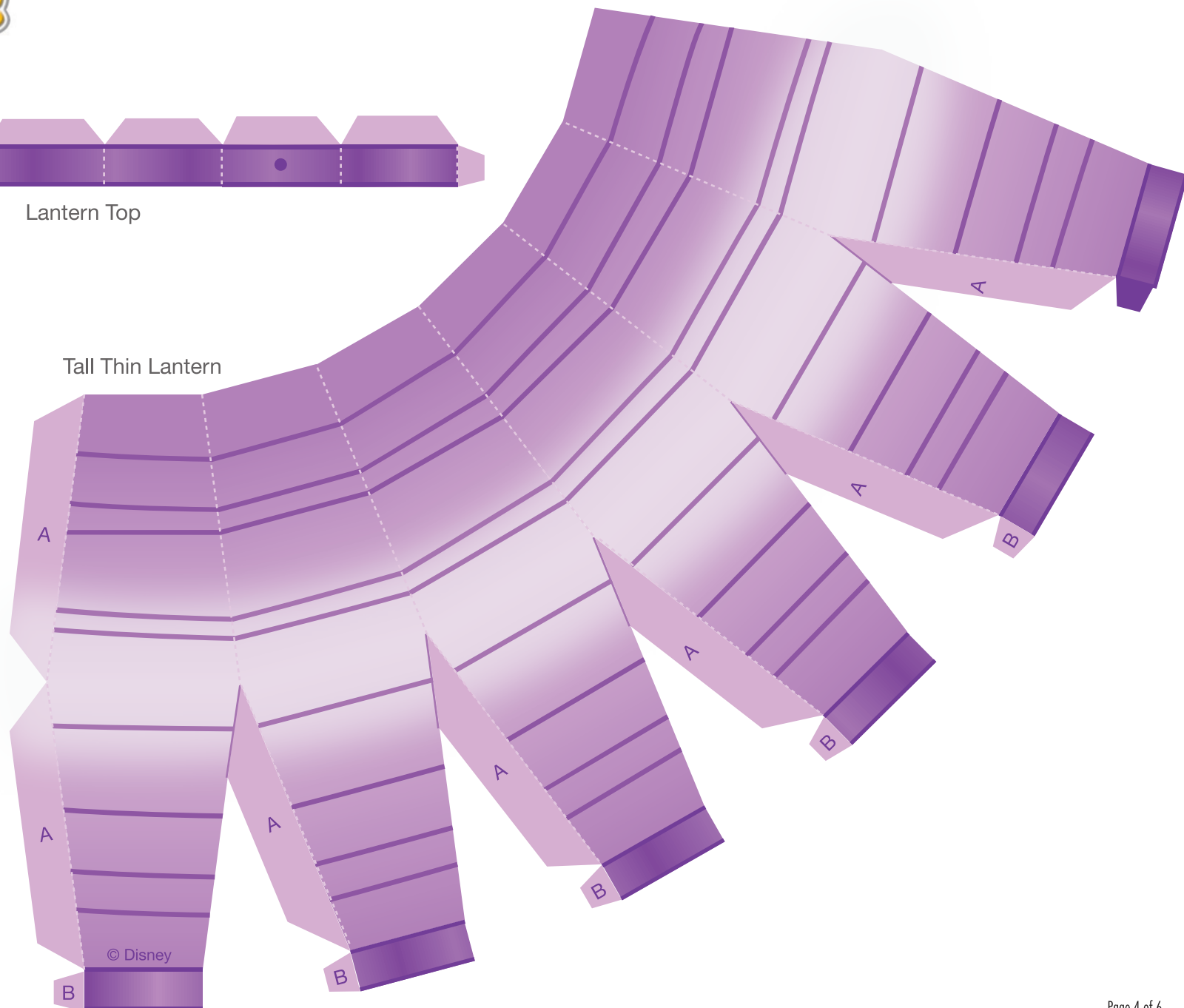
Lantern Top



Tall Thin Lantern



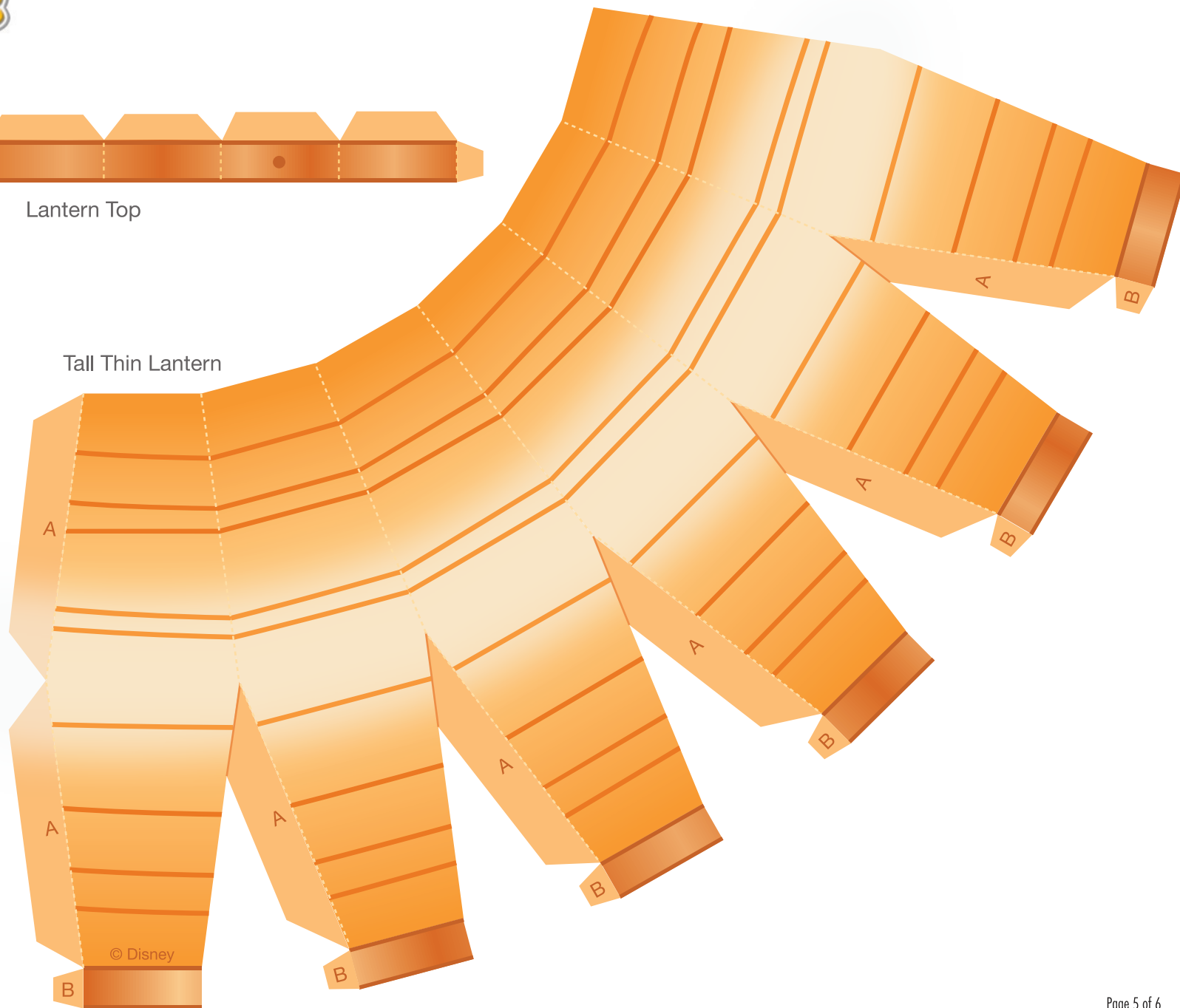
Lantern Top



Tall Thin Lantern



Lantern Top



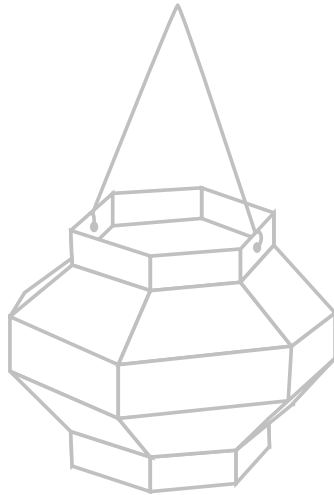
Tall Thin Lantern

Cutting intended for grown-ups.

### Instructions

#### Short Round Lantern

1. Print out the paper lanterns on regular paper or card stock. Cut them out.
2. Fold all tabs C and B along the dashed lines.
3. Starting from left to right, glue all tabs A to the back of the corresponding side. Close off the shape of the lantern by gluing the final three A tabs.
4. Glue all tabs B to the back of their corresponding sides. Glue all tabs C to the back of their corresponding sides.
5. Use a small hole punch to make two holes at the top where indicated by a dark circle and tie string to each holes. You can hang a single lantern, or tie many of them to a long string for a dangling string of lanterns.



#### Tall Thin Lantern

1. Print out the paper lanterns on regular paper or card stock. Cut them out.
2. Make all folds along the dashed white lines away from you.
3. Glue all tabs A to the back of their corresponding sides. Glue the last two tabs A to the back of their corresponding sides to close off the shape.
4. Glue all tabs B to the back of their corresponding sides.
5. To attach the lantern top, fold along all dashed lines away from you. Glue the end tab to the back of the corresponding side to complete the loop. Now glue the top 6 tabs to the inside of the top of the lantern.
6. Use a small hole punch to make two holes at the top where indicated by a dark circle and tie string to each holes. You can hang a single lantern, or tie many of them to a long string for a dangling string of lanterns.

