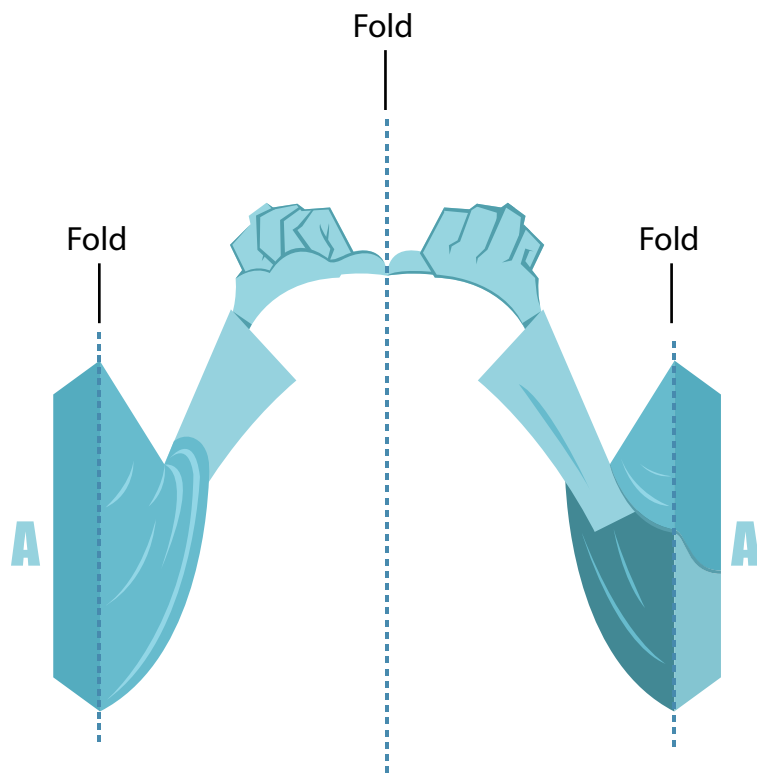
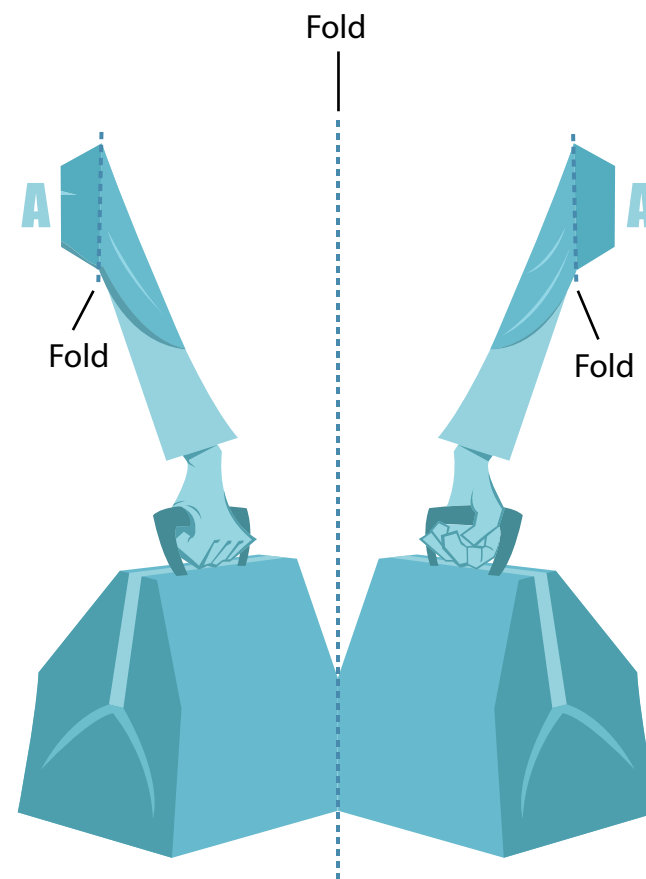


Right arm

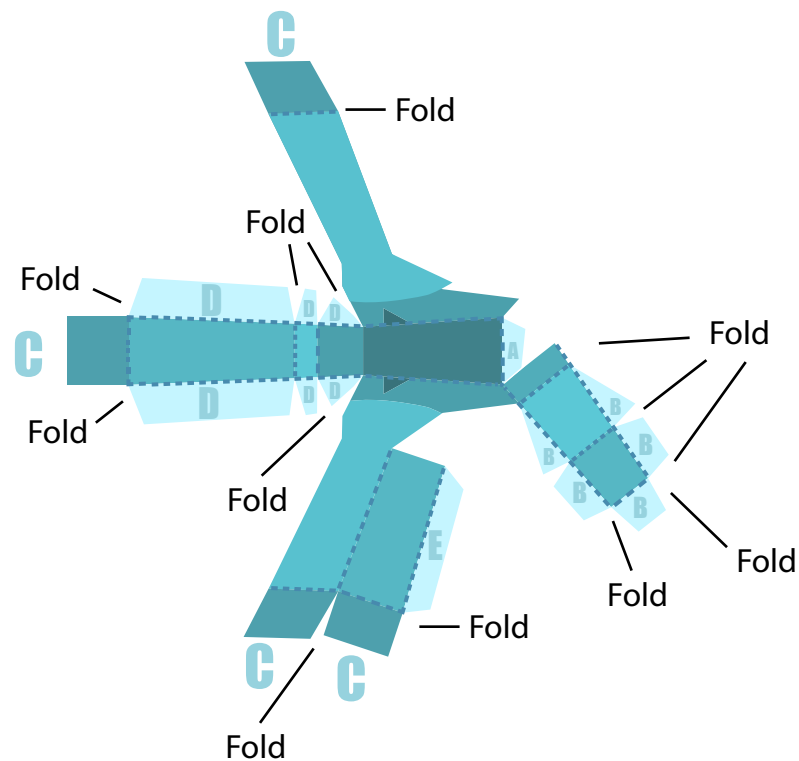
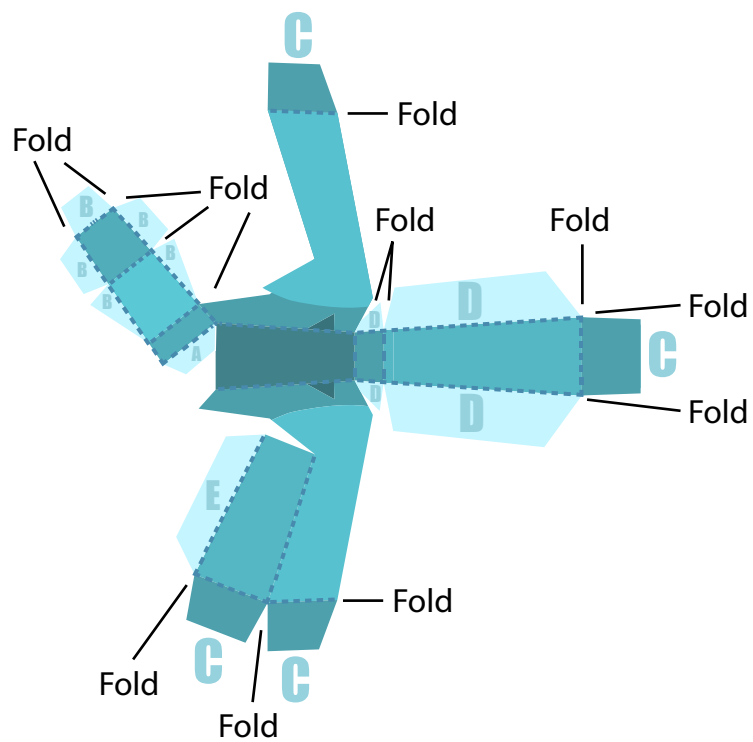


Left arm



Right foot

Left foot



Print out Phineas on regular paper or cardstock and cut out all of the pieces. You may need a craft knife for some of the smaller cuts. Do not allow children to use the craft knife.

Body:

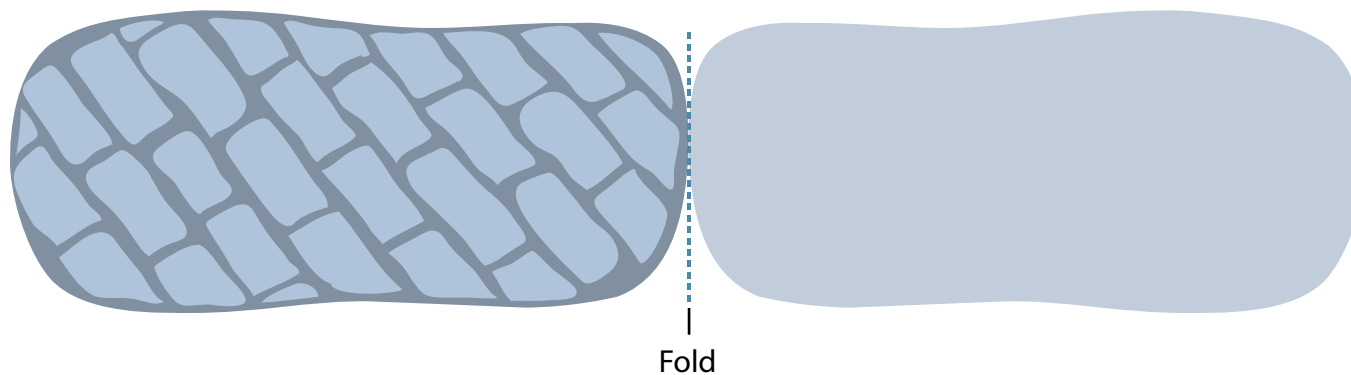
1. With the design facing you, fold all the tabs on Phineas' body away from you except the fold line across the back of his head. Fold that line towards you. Glue the A tabs to the inside of the front and back of Phineas' left shoulder. Then glue the B tabs to the inside of both shoulders.
2. Glue the C tab to close his chest cavity. Spread glue on the white side of Phineas' face and line it up with the back of head so that the design is now two-sided.
3. Spread glue on the D tabs and E tab and tuck them inside Phineas' coat like a box.

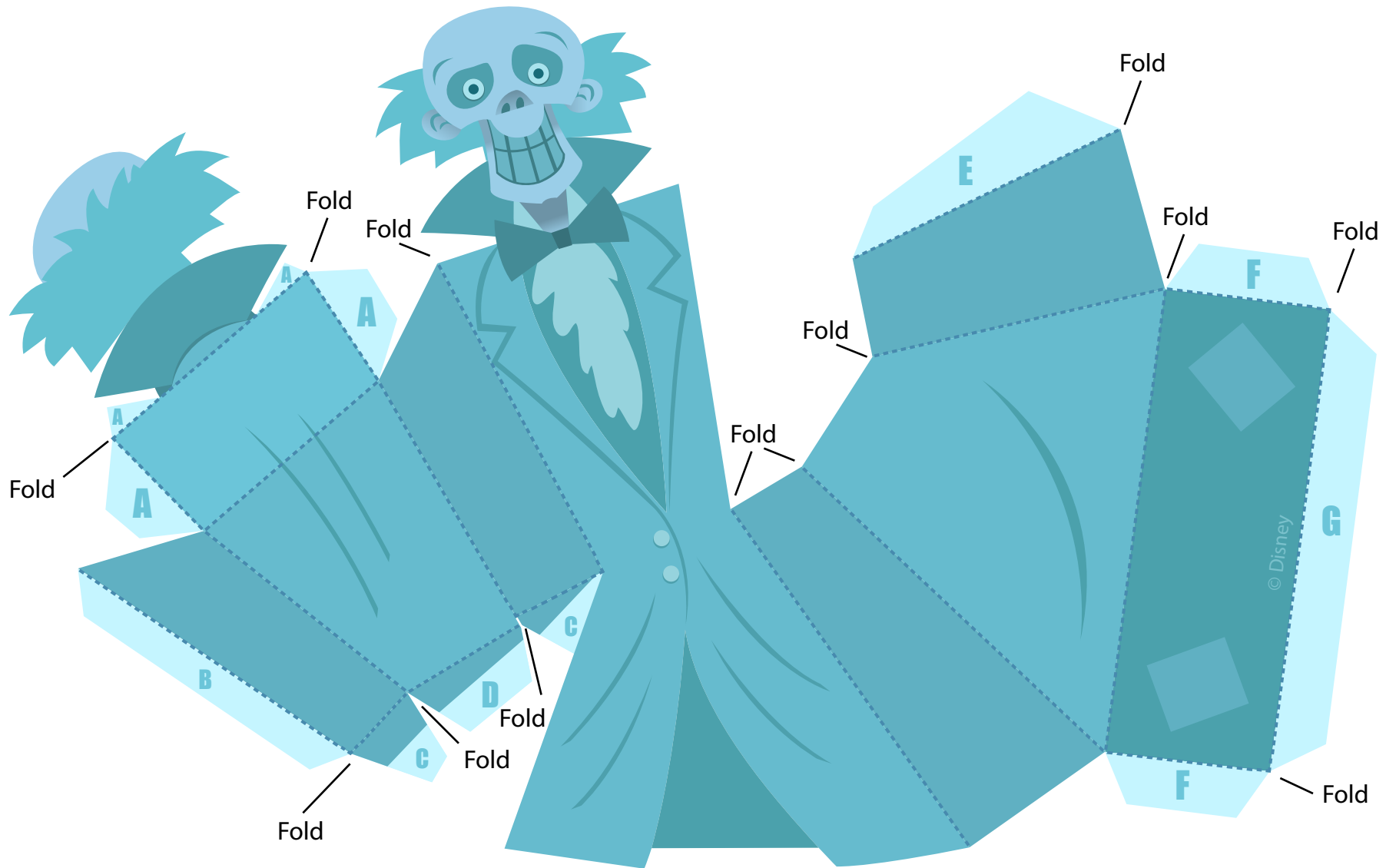
Arms:

1. Fold and line up each arm so that the design is two-sided and glue it together. Be careful not to get glue on the A tabs.
2. Fold the A tabs outward in opposite directions so that you can use them as a base to attach the arm to Phineas.
3. Attach the arms to the sides of Phineas' body.

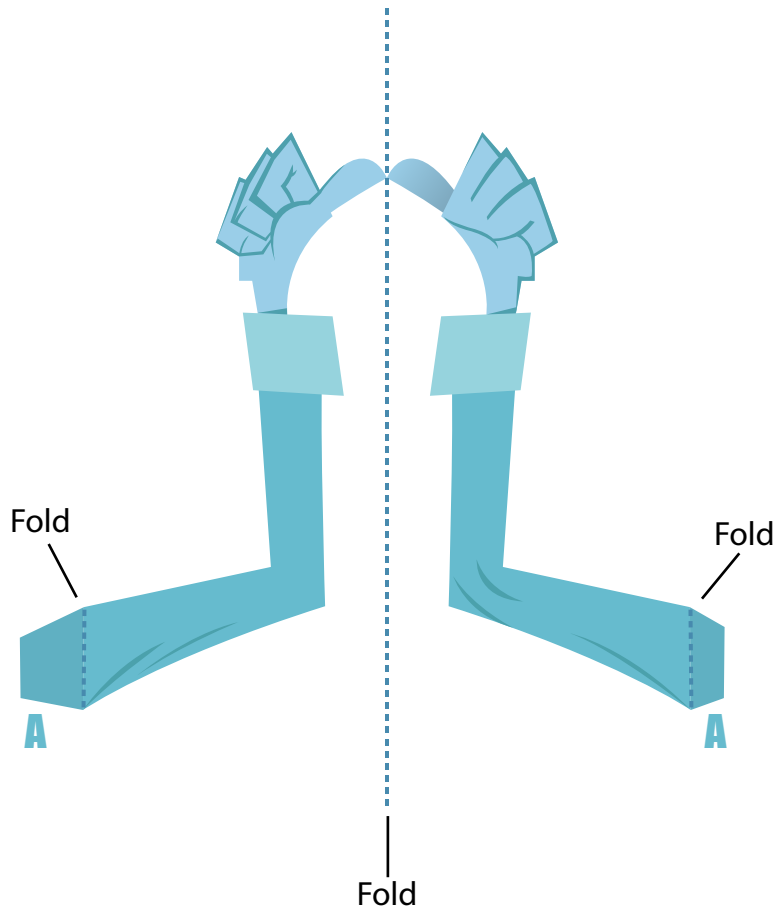
Legs:

1. With the design facing you, fold all of the tabs in Phineas' leg and foot away from you except the C tabs, fold those toward you.
2. Start with the A tab and glue it to the inside of Phineas' foot. Next glue the B tab to the inside of his foot.
3. Glue the D tabs to the inside of Phineas' leg. Close the leg by gluing the E tab to the inside of the leg.
4. Repeat these steps with the other leg.
5. Use the C tabs at the top of the legs as a base to attach the legs to Phineas' body. (For best results, line the tabs up with the designated outline on the bottom of Phineas' body.)
6. If your ghosts need some help standing up, cut out the stand, fold it in half along the line, and glue it together so the stand is now two-sided. Glue Ezra, Gus, and Phineas' feet to the stand.

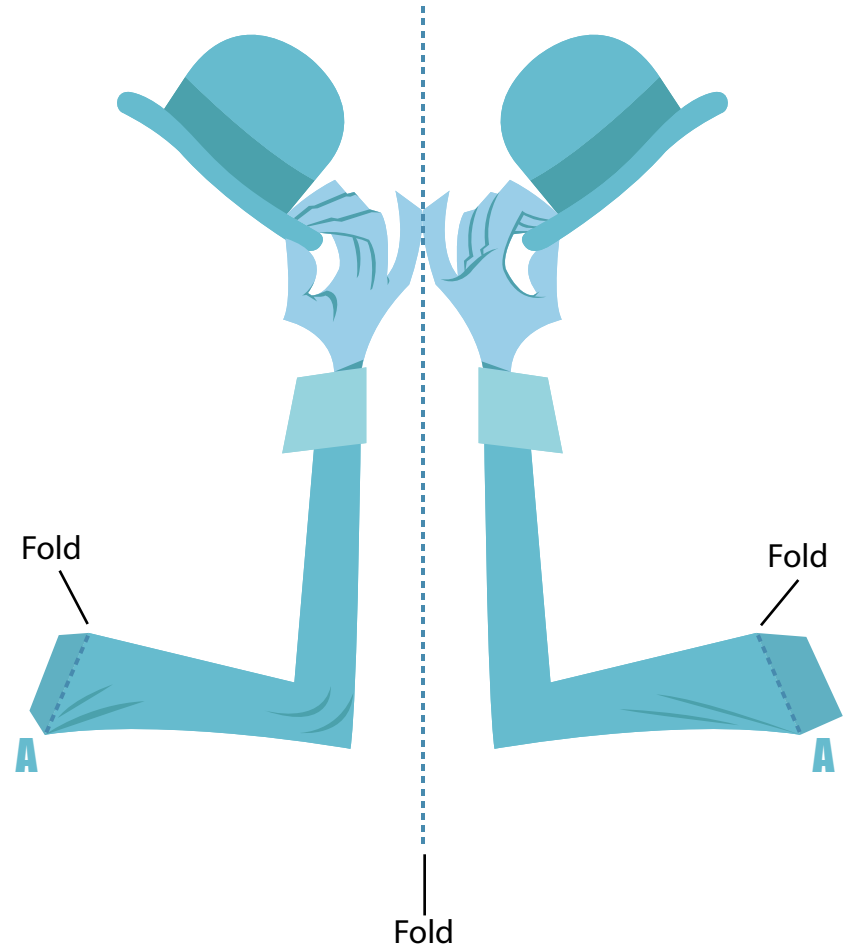


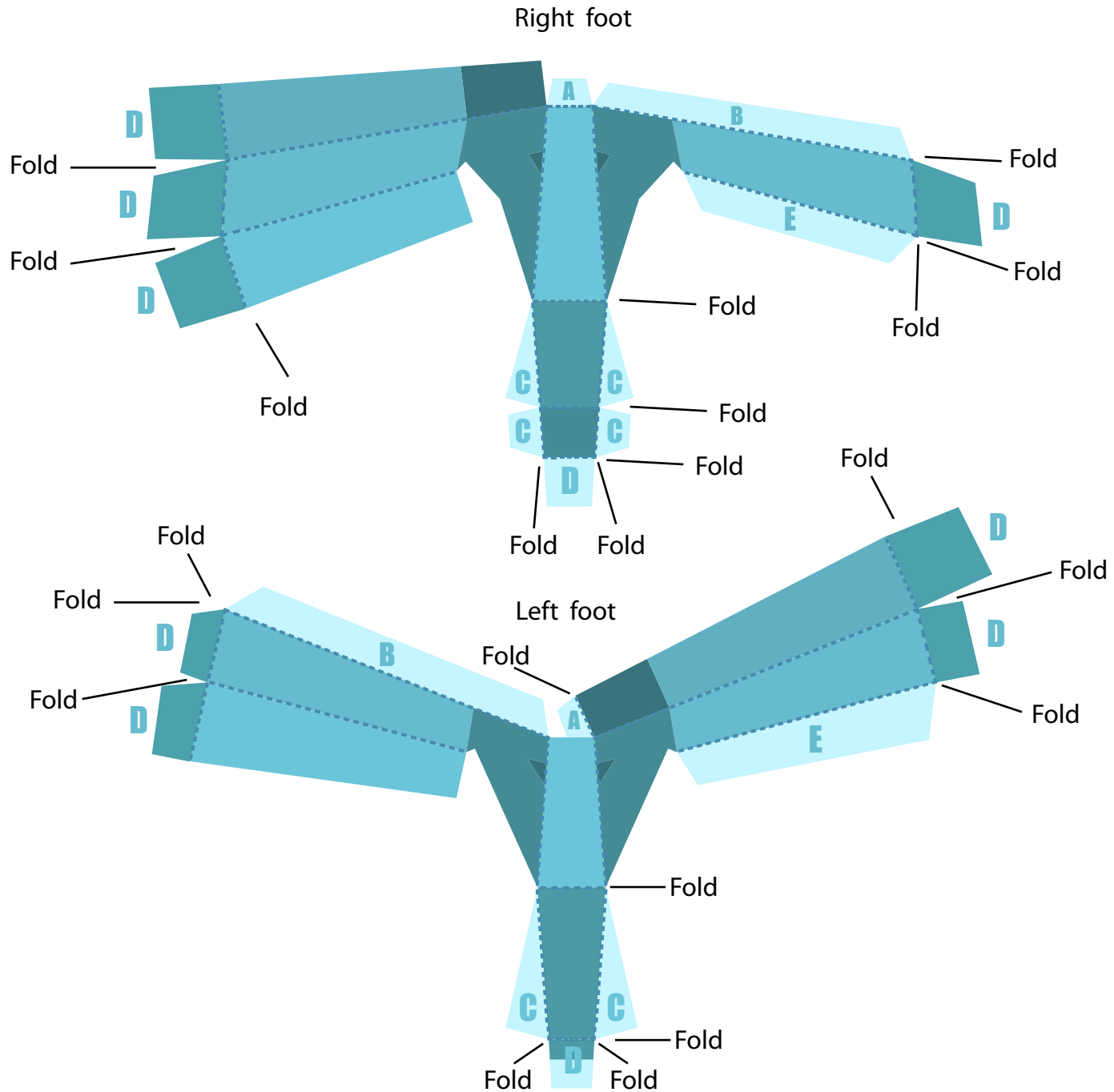


Right arm



Left arm





Print out Ezra on regular paper or cardstock and cut out all of the pieces. You may need a craft knife for some of the smaller cuts. Do not allow children to use the craft knife.

Body:

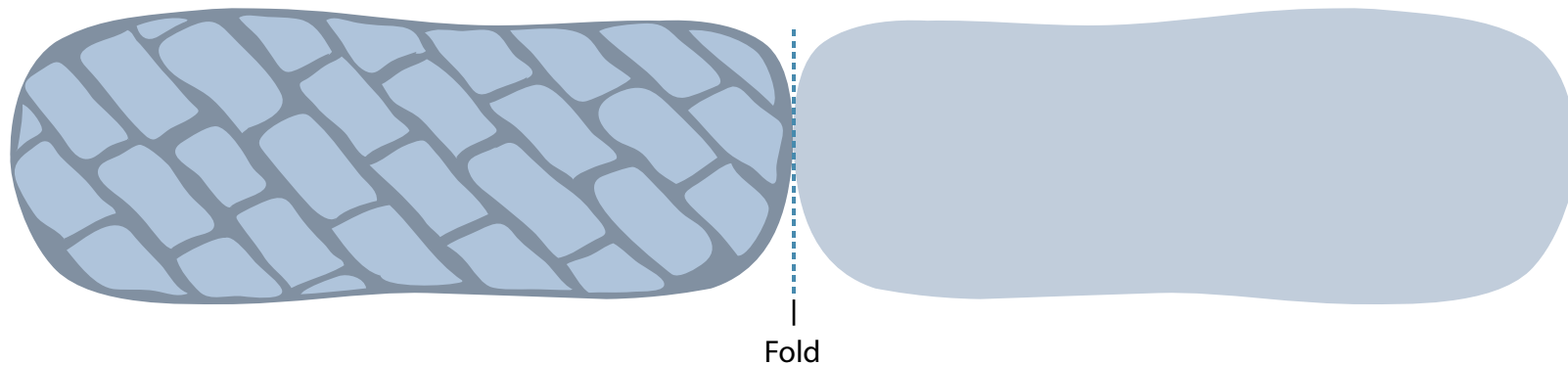
1. With the design facing you, fold all the tabs in Ezra's body away from you. Glue the A tabs to the inside of Ezra's shoulders. Then glue the B tab to close his chest cavity.
2. Spread glue on the white side of Ezra's face and line it up with the back of his head so that the design is now two-sided.
3. Glue the C tabs and D tab to the inside of the bottom of Ezra's coat. Then glue the E tab to the inside of Ezra's coat to close it.
4. Spread glue on the F tabs and G tab and tuck them inside Ezra's coat like a box.

Arms:

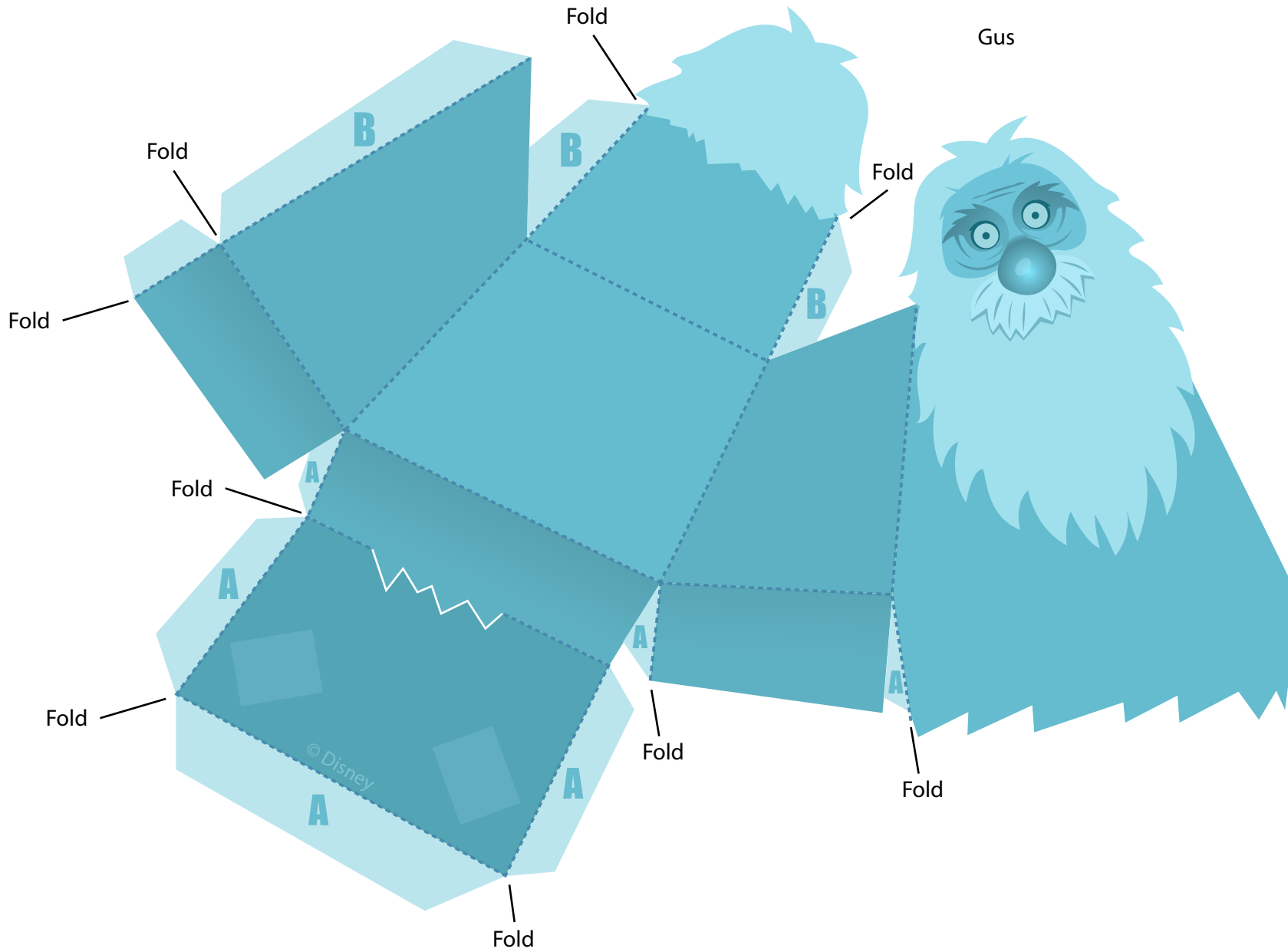
1. Fold and line up each arm so that the design is two-sided and glue it together. Be careful not to get glue on the A tabs.
2. Fold the A tabs outward in opposite directions so that you can use them as a base to attach the arm to Ezra.
3. Attach the arms to the sides of Ezra's body.

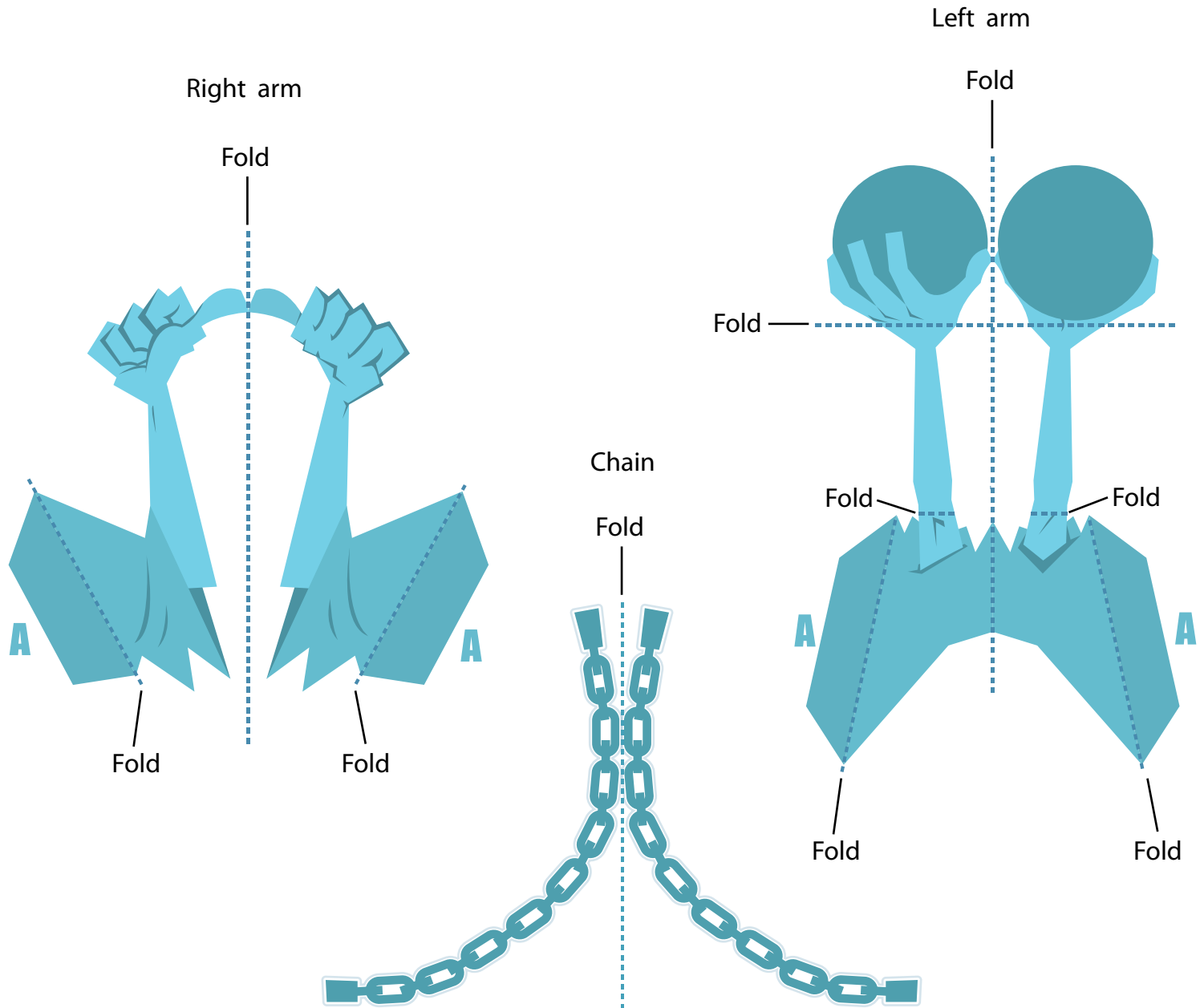
Legs:

1. With the design facing you, fold all the tabs in Ezra's legs away from you except the D tabs, fold those toward you.
2. Start with the A tab and glue it to the inside of Ezra's leg. Next glue the B tab to the inside of his leg.
3. Glue the C tabs to the inside of Ezra's foot. Glue the light-colored D tab to the inside of Ezra's leg and then close the leg by gluing the E tab.
4. Use the D tabs at the top of the leg as a base to attach the leg to Ezra's body. (For best results, line the tabs up with the designated outline on the bottom of Ezra's body.)
5. If your ghosts need some help standing up, cut out the stand, fold it in half along the line, and glue it together so the stand is now two-sided. Glue Ezra, Gus, and Phineas' feet to the stand.



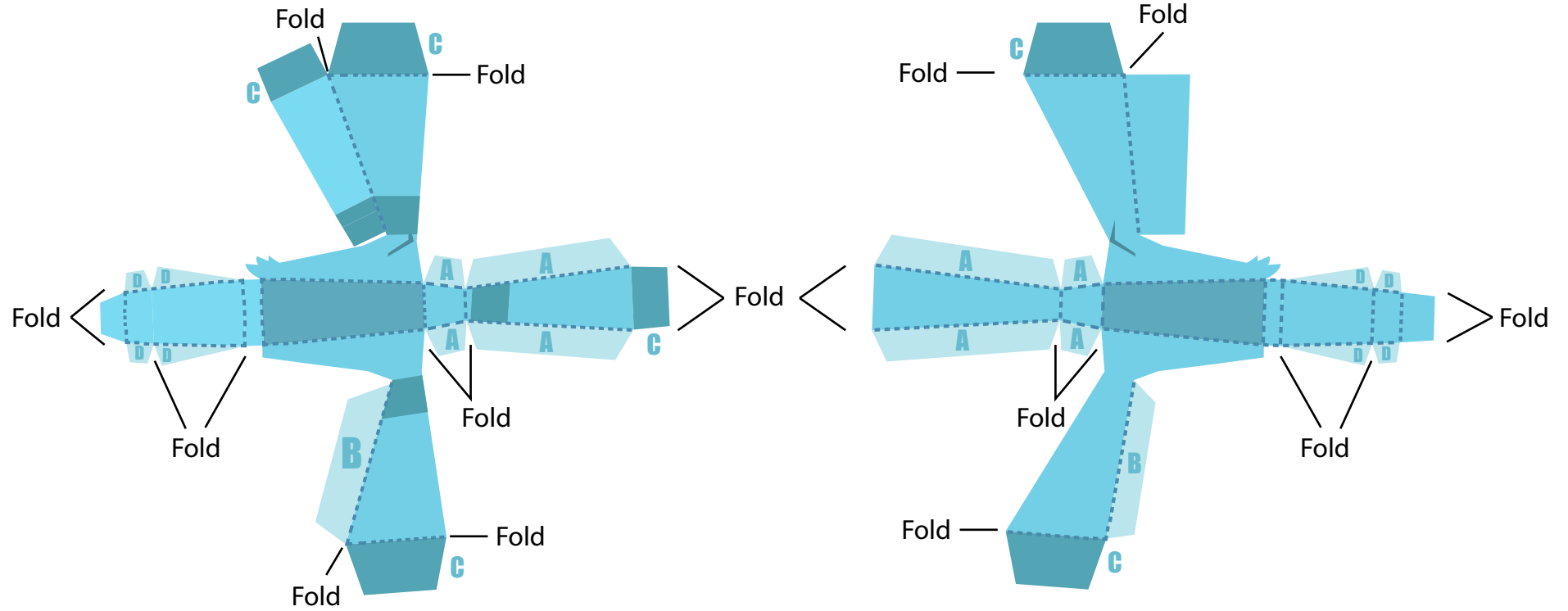






Right foot

Left foot



Print out Gus on regular paper or cardstock and cut out all of the pieces. You may need a craft knife for some of the smaller cuts. Do not allow children to use the craft knife.

Body:

1. With the design facing you, fold all the tabs on Gus' body away from you. Start by gluing the A tabs to the inside of Gus' body, forming a near-rectangle for Gus' base. Gus' fringe will hang lower than his base.
2. Next, attach the B tabs to the inside of Gus' shoulders.
3. Spread glue on the white side of Gus's face and line it up with the back of his head so that the design is two-sided.

Arms:

1. Fold and line up each arm so that the design is two-sided and glue it together. Be careful not to get glue on the A tabs.
2. Fold the A tabs outward in opposite directions so that you can use them as a base to attach the arm to Gus.
3. Attach the arms to the sides of Gus' body.

Legs:

1. With the design facing you, fold all of the tabs in Gus' leg and foot away from you except the C tabs, fold those toward you.
2. Glue the A tabs to the inside of the leg adjacent to it. Start with the back of the leg first, gluing the A tabs to the inside of Gus' rear calf and heel. Make sure not to glue the dark-blue C tabs at the legs' top, as those will later attach to Gus' body. Then glue the B tab to the inside of the leg to close the leg.
3. Glue the D tabs to the inside of the foot.
4. Use the C tabs at the top of the leg as a base to attach the leg to the underside of Gus' body. (For best results, line the tabs up with the designated outline on the bottom of Gus' body.)
5. If your ghosts need some help standing up, cut out the stand, fold it in half along the line, and glue it together so the stand is now two-sided. Glue Ezra, Gus, and Phineas' feet to the stand.

Chain:

1. Line up the chain so that the design is two-sided and glue it together.
2. Bending Gus' left arm (the one holding the ball) at the elbow and the hand, glue one end of the chain behind the ball. Then, attach the other end of the chain behind the cuff around Gus' right ankle.

