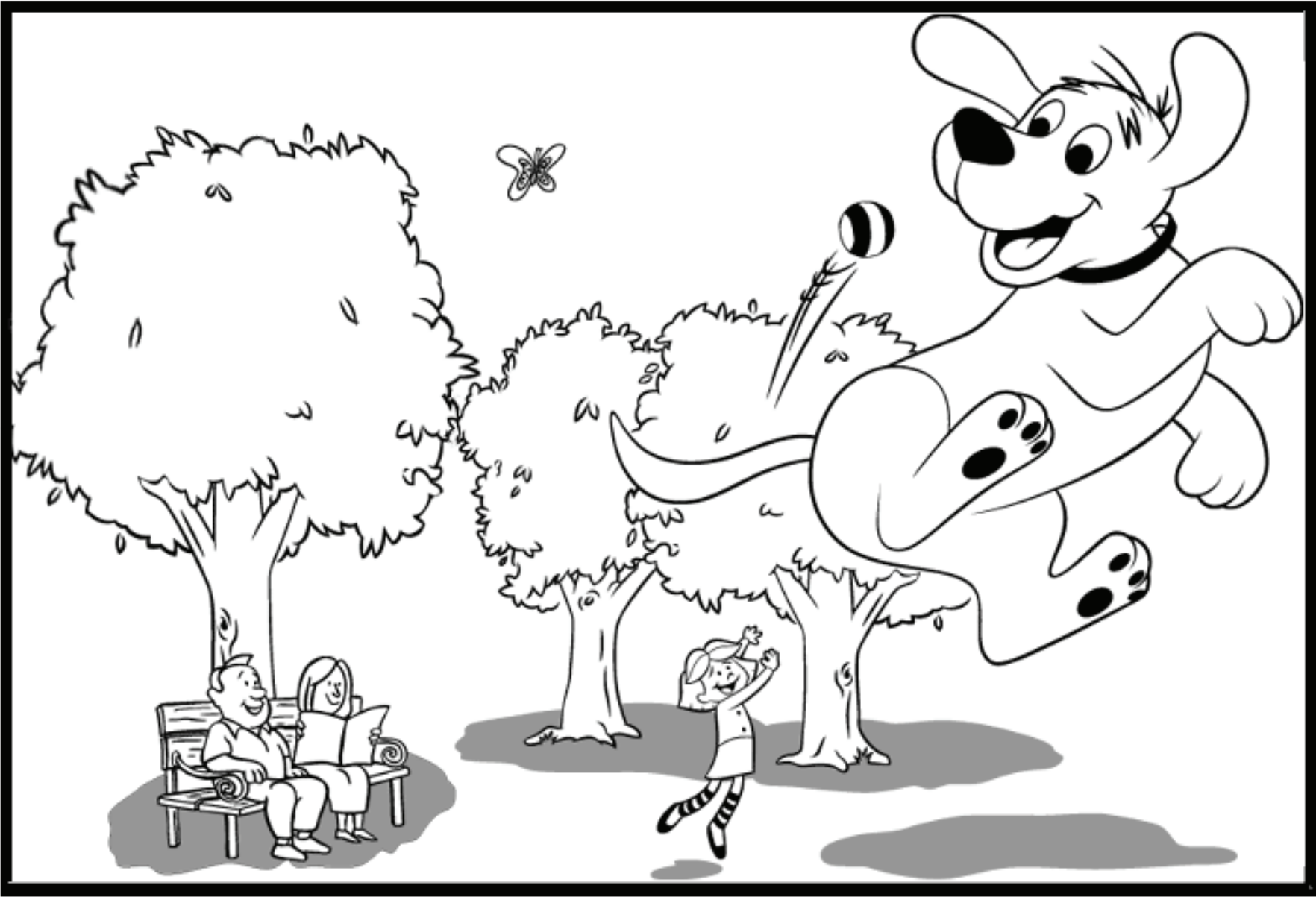


# Clifford

THE BIG RED DOG™



 **SCHOLASTIC**  
[scholastic.com/clifford](http://scholastic.com/clifford)



# Clifford

THE BIG RED DOG™



 SCHOLASTIC

[scholastic.com/clifford](http://scholastic.com/clifford)



Back



# A Clifford™ Activity Sheet

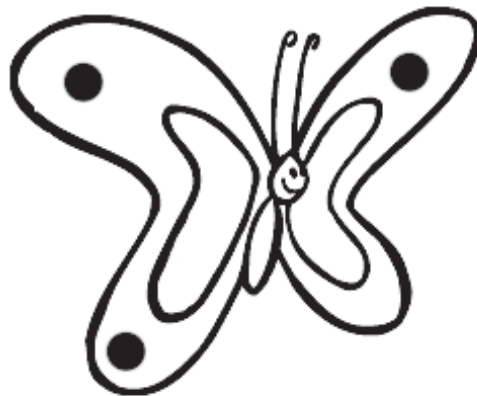
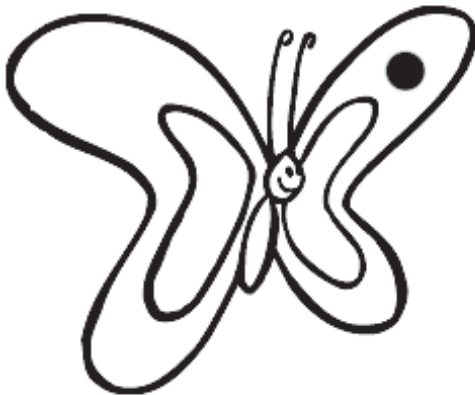
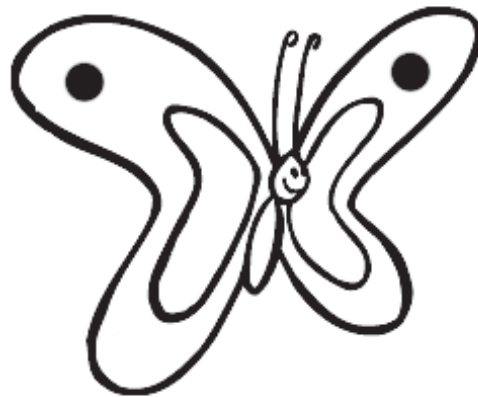
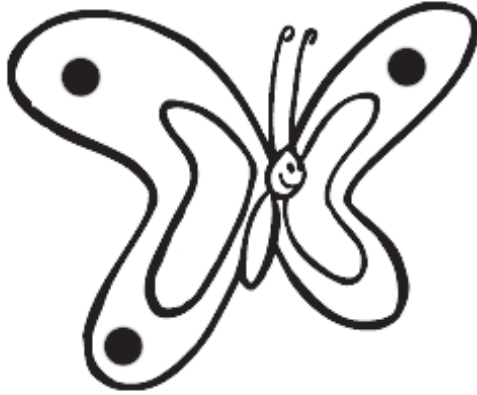
[scholastic.com/clifford](http://scholastic.com/clifford)

©2000 Scholastic Entertainment Inc. CLIFFORD and logos are trademarks of Norman Bridwell. Based on the Clifford book series ©Norman Bridwell. All rights reserved.

# Clifford

## THE BIG RED DOG™

Circle the 2 butterflies that are the same!



 SCHOLASTIC  
[scholastic.com/clifford](http://scholastic.com/clifford)



# Clifford

## THE BIG RED DOG™

How many dogs are in each group?  
Draw a line from the dogs to the correct number!



2



4



3



1



Back



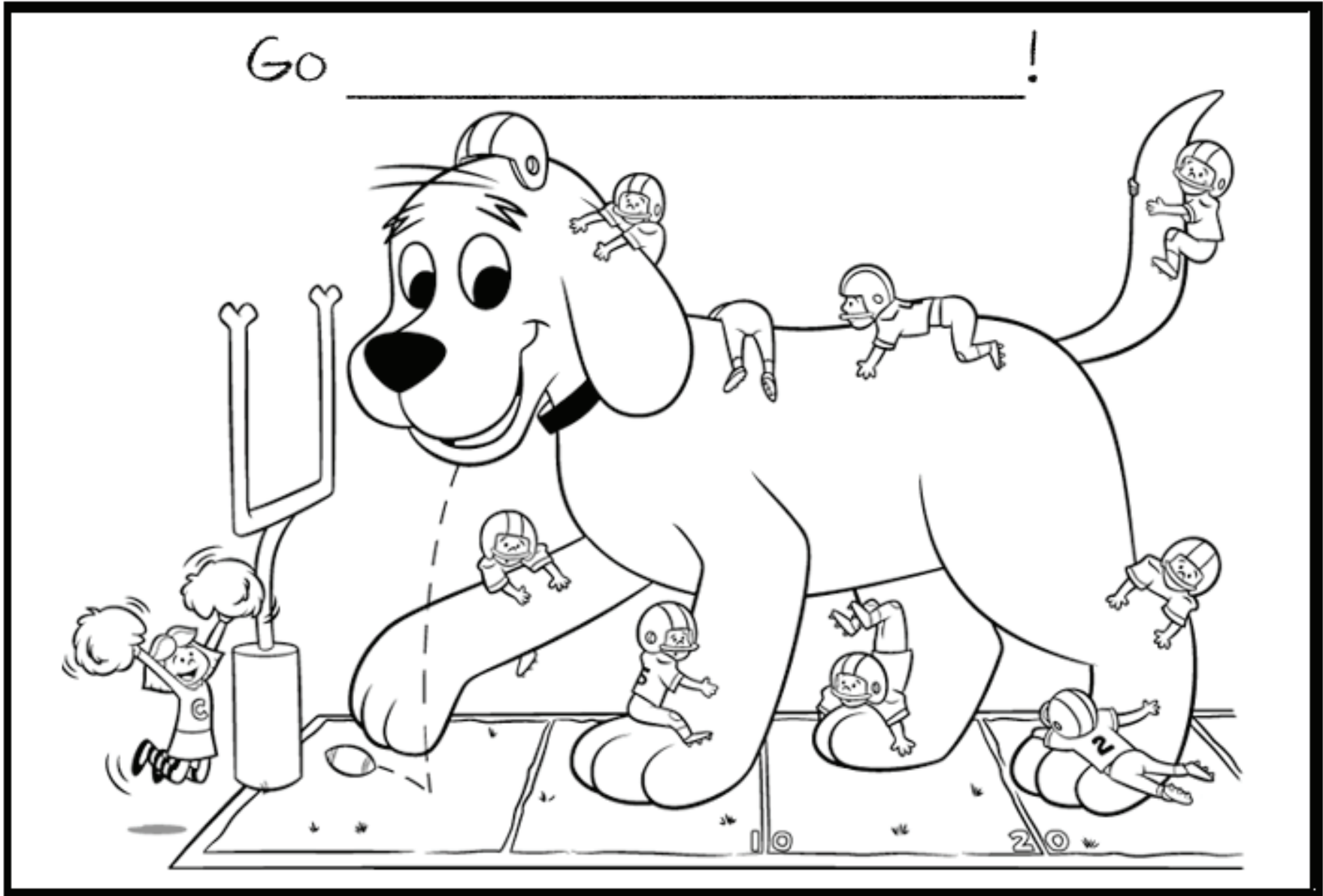
# A Clifford™ Activity Sheet

[scholastic.com/clifford](http://scholastic.com/clifford)

©2000 Scholastic Entertainment Inc. CLIFFORD and logos are trademarks of Norman Bridwell. Based on the Clifford book series ©Norman Bridwell. All rights reserved.

# Clifford

THE BIG RED DOG™



 SCHOLASTIC  
[scholastic.com/clifford](http://scholastic.com/clifford)



# Clifford

THE BIG RED DOG™

# Hip Hip Hooray!



 **SCHOLASTIC**  
[scholastic.com/clifford](http://scholastic.com/clifford)





# Clifford

## THE BIG RED DOG™

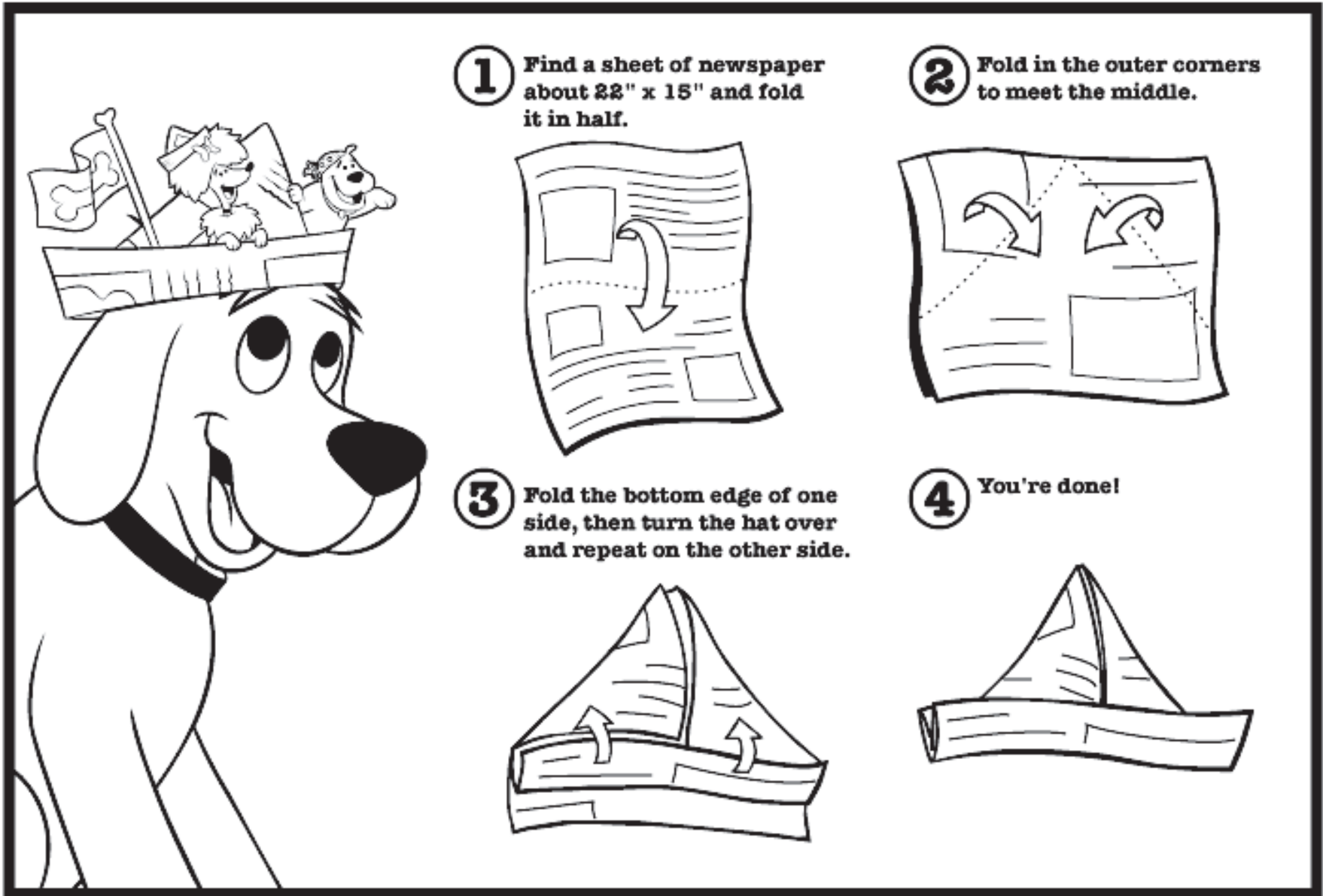


T-Bone and Cleo are looking for matching leaf pairs. Draw lines between the matching leaf shapes. Color the matching leaves the same color.



# Clifford

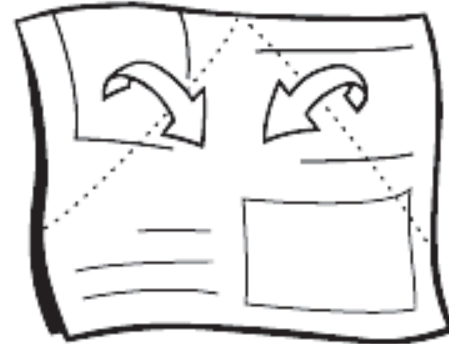
## THE BIG RED DOG™



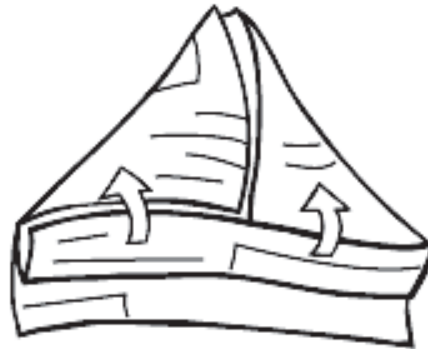
**1** Find a sheet of newspaper about 22" x 15" and fold it in half.



**2** Fold in the outer corners to meet the middle.



**3** Fold the bottom edge of one side, then turn the hat over and repeat on the other side.



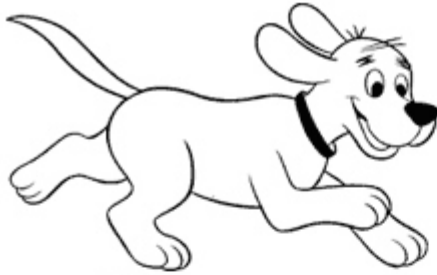
**4** You're done!



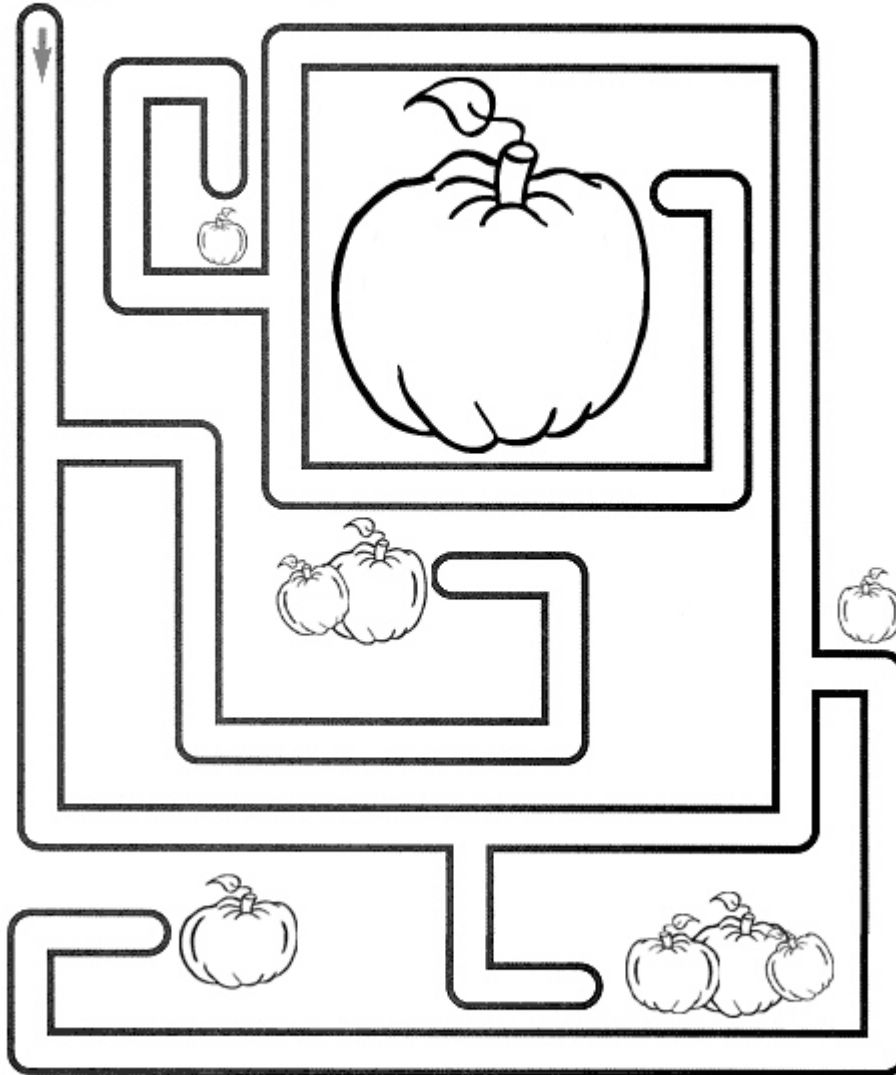
 SCHOLASTIC  
[scholastic.com/clifford](http://scholastic.com/clifford)



Back



Can you help Clifford get to the biggest pumpkin? Color the pumpkins **orange** and draw a face on the biggest one!



 Clifford THE BIG REDDOG™

[scholastic.com/clifford](http://scholastic.com/clifford)

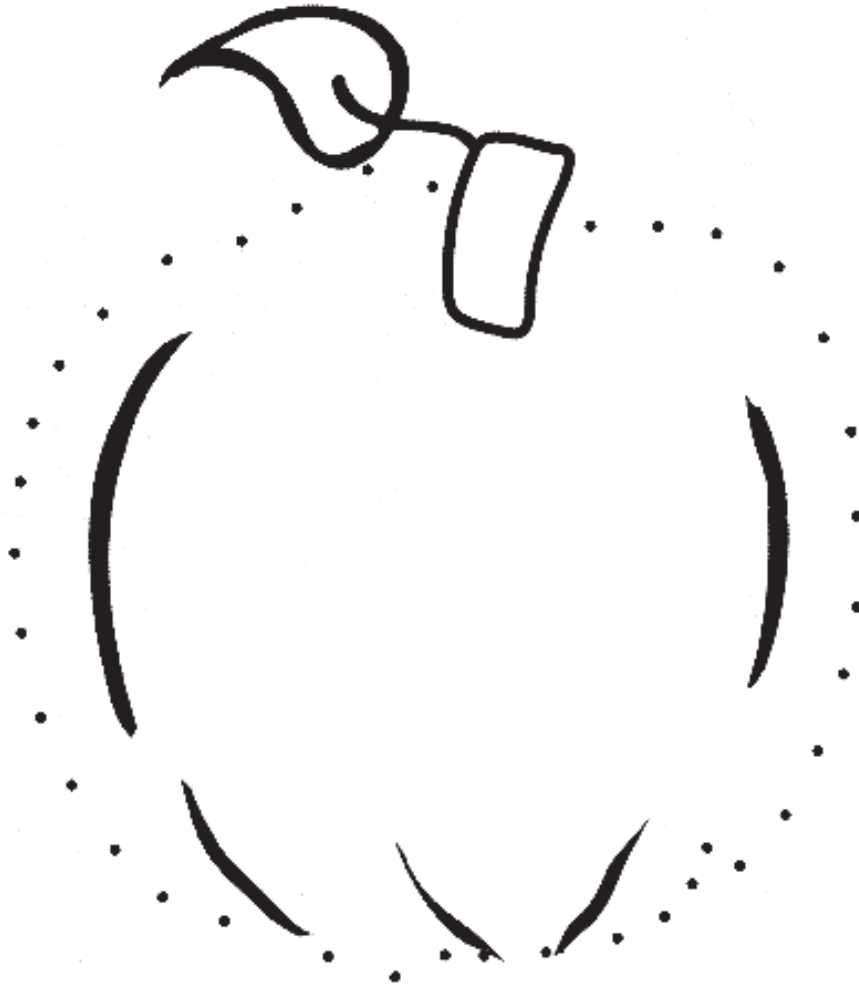
© 2003 Scholastic Entertainment Inc. CLIFFORD, CLIFFORD THE BIG RED DOG and logos are trademarks of Norman Bridwell. All rights reserved.

# Clifford

## THE BIG RED DOG™



It's time for Halloween!  
Connect the dots to see  
what Clifford is looking  
for. Color it orange.

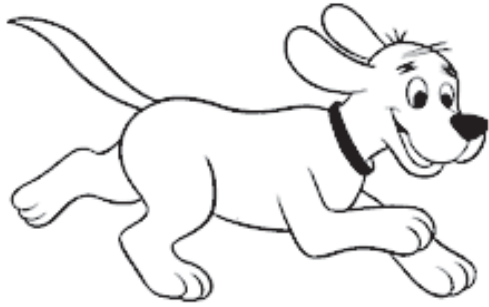


 SCHOLASTIC  
[scholastic.com/clifford](http://scholastic.com/clifford)

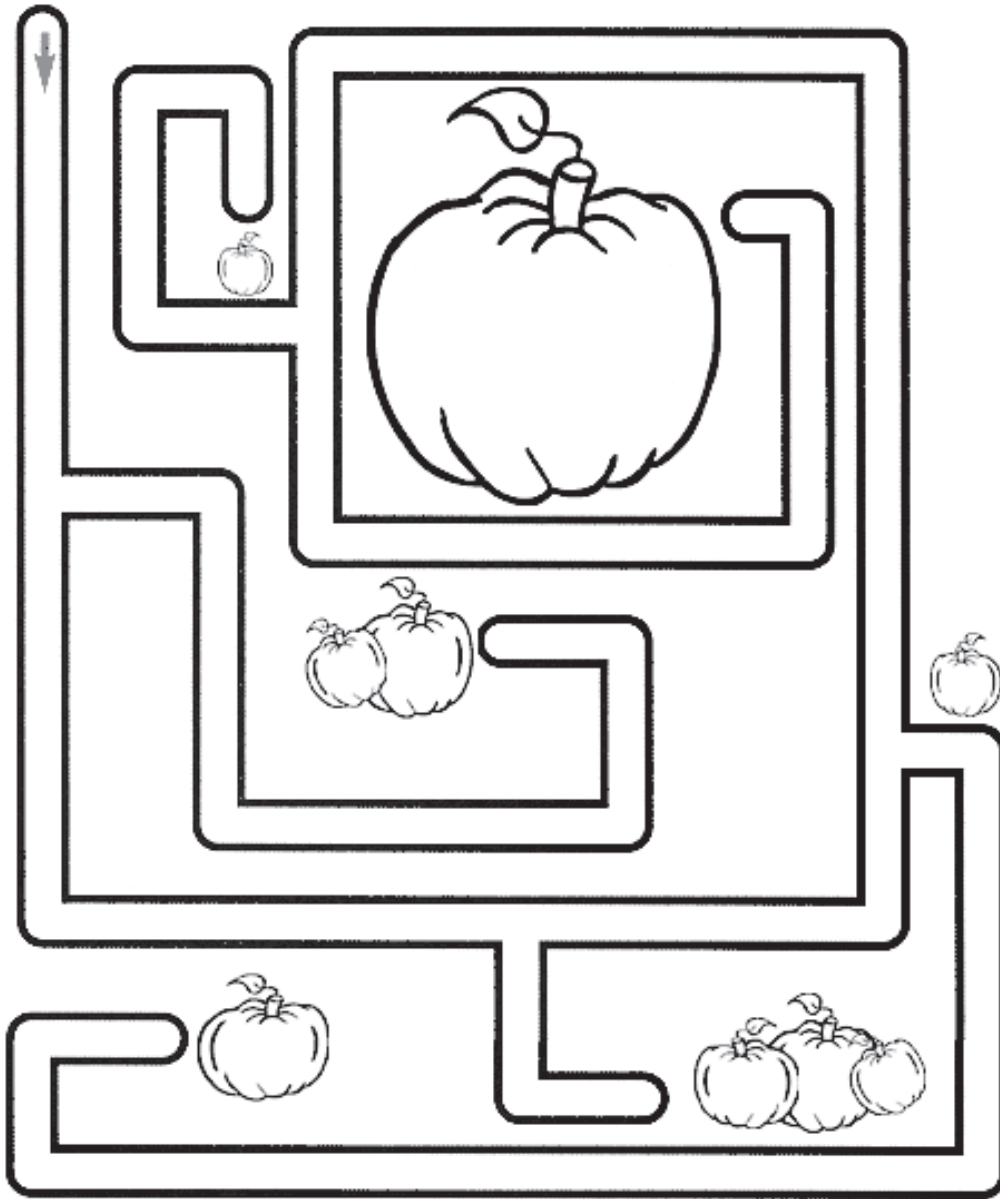


# Clifford

## THE BIG RED DOG™



Can you help Clifford get to the biggest pumpkin? Color the pumpkins orange and draw a face on the biggest one!



 SCHOLASTIC  
[scholastic.com/clifford](http://scholastic.com/clifford)



Back



[scholastic.com/clifford](http://scholastic.com/clifford)

© 2003 Scholastic Entertainment Inc. SCHOLASTIC and logos are trademarks and or registered trademarks of Scholastic Inc. CLIFFORD, CLIFFORD THE BIG RED DOG, CLIFFORD'S PUPPY DAYS and associated designs are trademarks and or registered trademarks of Norman Bridwell. All rights reserved.

Back



[scholastic.com/clifford](http://scholastic.com/clifford)

© 2003 Scholastic Entertainment Inc. SCHOLASTIC and logos are trademarks and or registered trademarks of Scholastic Inc. CLIFFORD, CLIFFORD THE BIG RED DOG, CLIFFORD'S PUPPY DAYS and associated designs are trademarks and or registered trademarks of Norman Bridwell. All rights reserved.

# Clifford

## THE BIG RED DOG™

Draw lines to match the animals with their shadows!



 SCHOLASTIC  
[scholastic.com/clifford](http://scholastic.com/clifford)





# Clifford

## THE BIG RED DOG™

# Clifford's Theme Song

Music by Mark Mothersbaugh and  
Josh Mancell for Mutato Muzika

Lead Vocals by Jason Michael



Clifford needed Emily  
So she chose him for her own  
And her love made Clifford grow so big  
That the Howards had to leave their home.

Clifford's the best friend anyone could know  
He's the greatest dog ever, I really think so  
Clifford's so loyal, he's there when you call  
I love Clifford, The Big Red Dog!

So they packed up the family car  
And the Howards left the city  
They moved to Birdwell Island and found many new friends  
There to greet Clifford and Emily.

Clifford's so much fun, he's a friend to us all,  
I love Clifford the Big Red Dog!



 SCHOLASTIC  
[scholastic.com/clifford](http://scholastic.com/clifford)

